

FED. ROAD NO.	STATE	FED. AID PROJECT	FISCAL YEAR	SHEET NO.	TOTAL SHEETS
6	Ark.	S5014	1953		
JOB No.	10326	3	102		

SCHEDULE OF BRIDGE QUANTITIES

BRIDGE NO.	CODE NO.	ITEM NO.		103	SP& 802	S. 103	SP& 804	SP-805-3	807	929	S.P.	
		ITEM	UNIT OF BRIDGE	DRY EXCAVATION FOR STRUCTURES	CLASS "B" CONCRETE FOR BRIDGES	REINFORCING STEEL	CONCRETE PILING 16" OCTAGONAL	STEEL PLATE GUARD RAIL (10 GA.)	STRUCTURAL STEEL IN BEAM SPANS	BRIDGE NAME PLATES TYPE "C"	REMOVAL OF EXISTING BRIDGE STRUCTURES	
				UNIT	CU. YD.	CU. YD.	LB.	LIN. FT.	LIN. FT.	LB.	EACH	COMPLETE ITEM
2884	X031	End Bent No. 1		38	9.98	1353	180	7.82	389	1		
		Intermediate Bents No. 2-5			20.68	3380	565					
		End Bent No. 6		38	9.98	1353	180	7.82	389			
		Five 30'-0" I-Beam Spans			88.48	15165		300.00	59825			
		Totals for Bridge No. 2884		76	129.12	21251	925	315.64	60633	1	6%	
2885	X031											
		End Bent No. 1		48	11.92	1440	280	9.06	442	1		
		Intermediate Bents No. 2-7			35.28	5436	1399					
		End Bent No. 8		48	11.92	1440	280	9.06	442			
		Seven 40'-0" I-Beam Spans			164.04	28452		560.00	153100			
Totals for Bridge No. 2885		96	223.16	36768	1959	578.12	153984	1	30%			
2886	X031											
		End Bent No. 1		40	10.53	1356	252	9.42	414	1		
		Intermediate Bents No. 2-5			22.56	3264	805					
		End Bent No. 6		38	10.53	1356	252	9.42	414			
		Five 30'-0" I-Beam Spans			88.60	15225		300.00	60275			
Totals for Bridge No. 2886		78	132.22	21201	1309	319.84	61103	1	64%			
Totals for Job No. 10326		250	484.50	77220	4193	1212.60	275720	3	100%			

SCHEDULE OF BRIDGE QUANTITIES BEASLEY - LEPANTO POINSETT COUNTY

ROUTE 143 SEC. 0

ARKANSAS STATE HIGHWAY COMMISSION
LITTLE ROCK, ARK.

Drawn By: J.E.H. Date: 8-25-53
Traced By: _____ Date: _____
Checked By: _____ Date: _____
Scale: _____
BRIDGE NO. 2884, 2885 DRAWING NO. 8768
2886

Revised
9-1-53 - H.B. Br. 2884.

Bridge Design Engineer

31

REVISION	DATE	BY	REASON	DATE	BY	FED. ROAD NO.	STATE	FED. AID PROJ. NO.	SHEET NO.	TOTAL SHEETS
						6	ARK.	DAW 66-MC-5529	5	30
JOB NO. 10756 2644A-3872A - QUANTITIES - 18474										

SCHEDULE OF BRIDGE QUANTITIES

BRIDGE NUMBER	CODE NUMBER	NAME PLATE TITLE	UNIT OF STRUCTURES	ITEM NO.	B01	SP# B02	B03	B04	SP # B05 **	SP # B05 **	B06	SP # B07 *	B09	B12	B03	SP JOB 10756
				ITEM	COMMON EXCAVATION FOR STRUCTURES - BRIDGE	CLASS 5 CONCRETE	BOLTED LINSEED OIL	REINFORCING STEEL (GRADE 40)	PRECAST CONCRETE PILING (16" OCT)	PRECAST CONCRETE PILING (18" OCT)	STEEL PLATE GUARD BRIDGE RAILING	STRUCTURAL STEEL IN BEAM SPANS (A-36)	PREFORMED JOINT SEALER	BRIDGE NAME PLATES (TYPE C)	TEMPORARY BRIDGE STRUCTURES	REMODELING OF EXISTING BRIDGES
				UNIT	CU. YD.	CU. YD.	GAL.	LB	LIN. FT.	LIN. FT.	LIN. FT.	LB	LIN. FT.	EACH	LUMP SUM	LUMP SUM
2644A	X071	TYRONZA RIVER	BENTS 3-0			22.00		1560								.30
			TOTALS FOR BRIDGE		0	22.00	0	1560	0	0	0	0	0	0	-	.30
2855A	X071	TYRONZA RIVER	BENTS 3-0			23.40		1690								.30
			TOTALS FOR BRIDGE		0	23.40	0	1690	0	0	0	0	0	0	-	.30
331A	X071	TYRONZA RIVER	BENTS 3-4			9.80		740								.15
			TOTALS FOR BRIDGE		0	9.80	0	740	0	0	0	0	0	0	-	.15
3872A	X071	TYRONZA RIVER	BENT 1	51		14.00	0.2	1470	180			169		1		
			BENT 2			6.64	-	869		275						
			BENT 3			5.97	-	433								
			BENTS 4 & 5			11.93	-	866								.10
			2-54 SPANS			62.36	8.0	13562			216	52771	102.0			.15
			TOTALS FOR BRIDGE	51		100.9	8.2	17220	180	275	216	53240	102.0	1	1	.25
			TOTALS FOR JOB 10756	51		156.1	8.2	21210	180	275	216	53240	102.0	1	1	1.00

* NOTE SP B07-4, MANDATORY NOTCH TOUGHNESS FOR BRIDGE STEELS
SEE DWG 18482 FOR DESIGNATION OF MAIN LOAD CARRYING MEMBERS.

** SP REFERS TO SP B02-5

SCHEDULE OF BRIDGE QUANTITIES
TYRONZA RIVER BRIDGES AND APPROACHES
POINSETT COUNTY

ROUTE 63 9
135 1
118 SEC. 2

ARKANSAS STATE HIGHWAY COMMISSION
LITTLE ROCK, ARK.

DRAWN BY: TEB DATE: 2/15/74
DESIGNED BY: JCK DATE: 2-18-74
CHECKED BY: JED DATE: 2/21/74

SCALE: NONE

BRIDGE NO. 2644A, 2855A, 331A, 3872A DRAWING NO. 18474

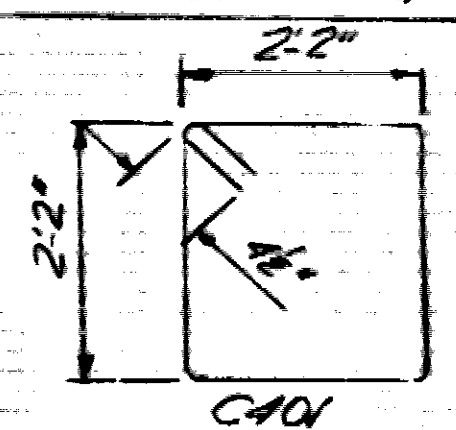
41

DATE REVISED	DATE FILMED	DATE REVISED	DATE FILMED	FED. ROAD DIST. NO.	STATE	FED. AID PROJ. NO.	SHEET NO.	TOTAL SHEETS
				6	ARK.	PCW 66-74-C-005	15	30
JOB NO. 10756								
2644A-3872A REMODEL BENTS 18483								

BAR LIST - PER BENT

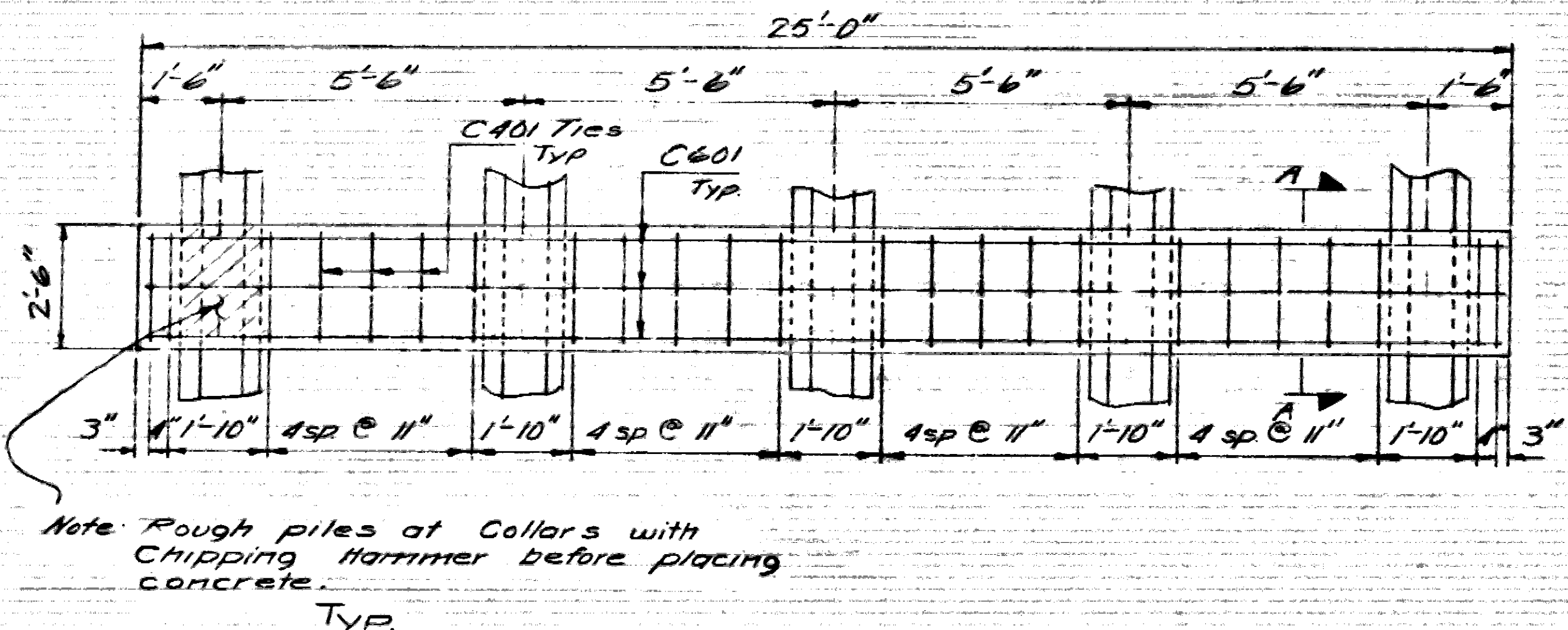
Mark	No. Req'd	Length	Pr. Dia.
C401	8	9'-2"	2"
C601	6	**	3"

BENDING DIAGRAM

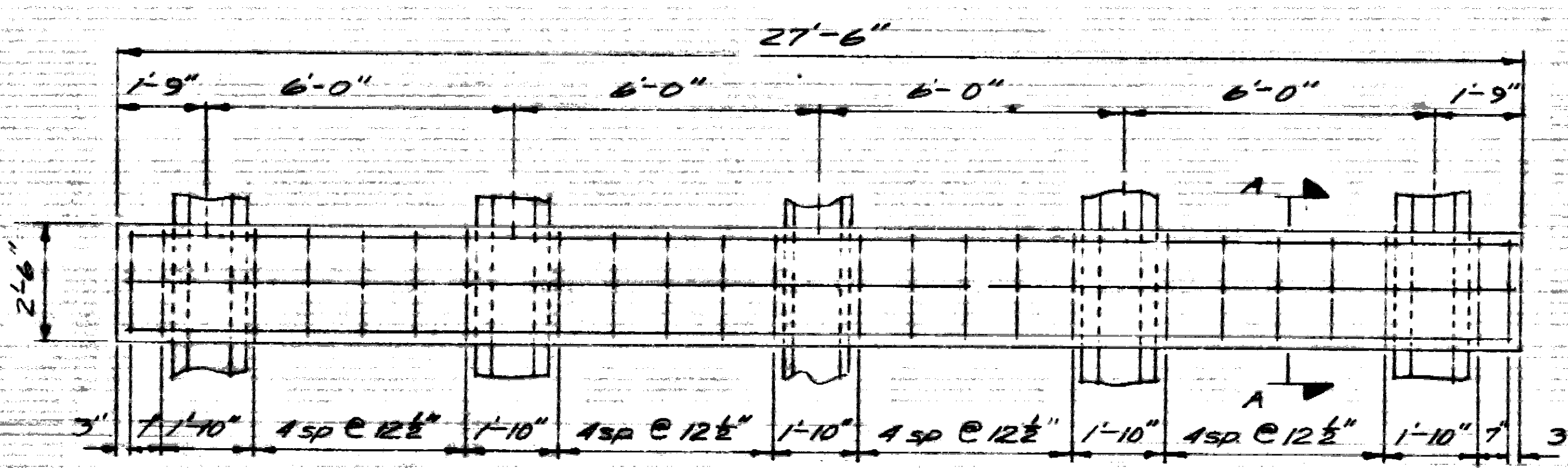


Dimensions are out to out of Bar.

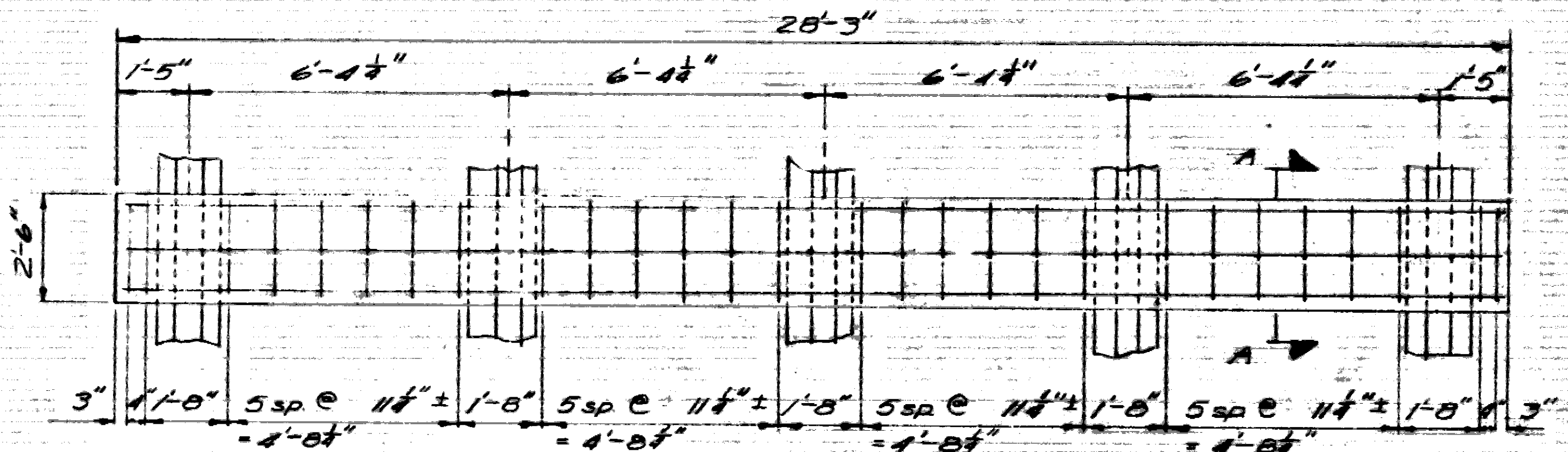
- * 24 Req'd. for BR 3311
- * 28 Req'd. for BR 2885
- * 24 Req'd. for BR 2644
- * 28 Req'd. for BR 3872
- ** Length = 24'-7" for BR 3311
- ** Length = 27'-10" for BR 2885
- ** Length = 27'-1" for BR 2644
- ** Length = 29'-1" for BR 3872



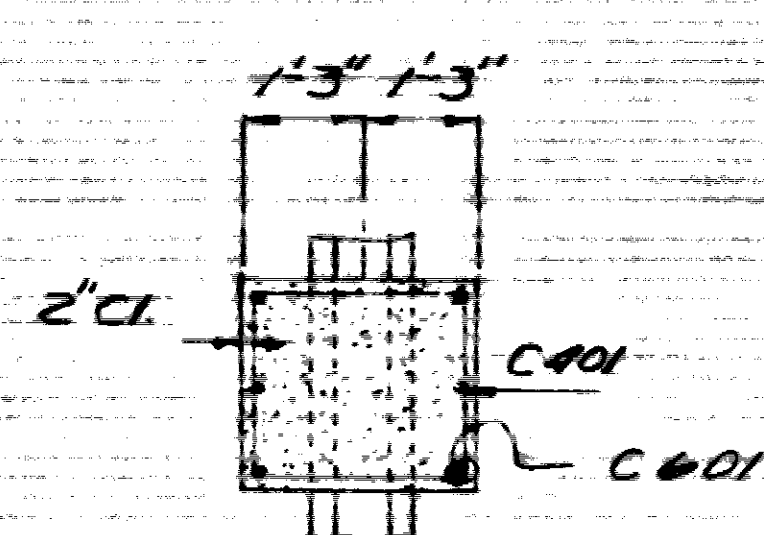
ELEVATION - COLLAR - BR. 3311
Bents 3 & 4



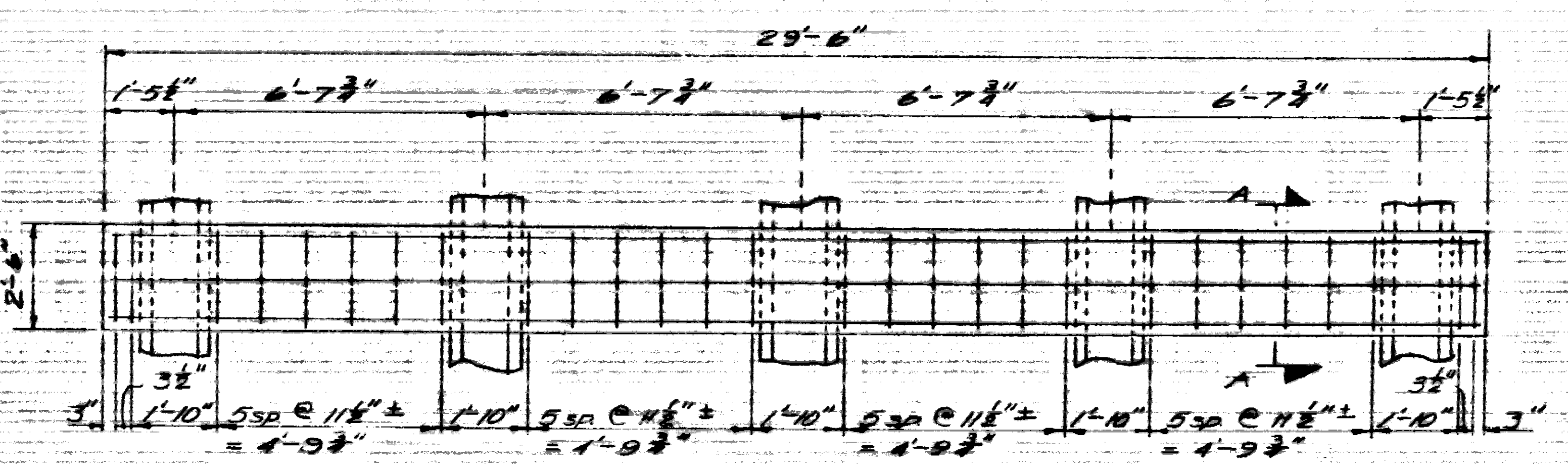
ELEVATION - COLLAR - BR. 2644
Bents 3, 4, 5 & 6



ELEVATION - COLLAR - BR. 2885
Bents 3, 4, 5 & 6



TYP. SECTION A-A

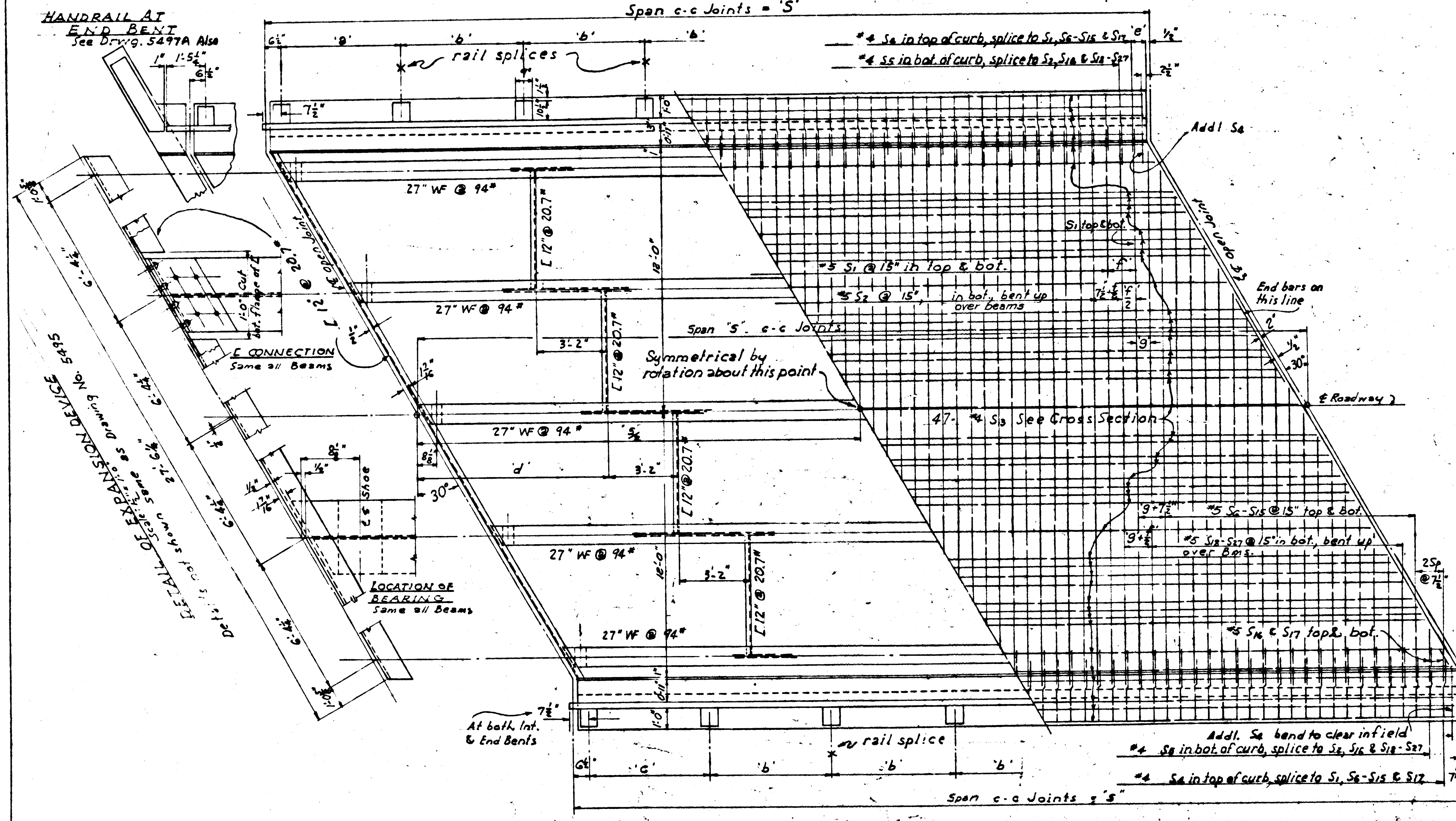


ELEVATION - COLLAR - BR. 3872
Bents 2, 3, & 4

GENERAL NOTES
ALL CONCRETE SHALL BE CLASS "S". ALL EXPOSED CORNERS TO BE CHAMFERED 3/4".
REINFORCING STEEL SHALL BE ASTM A615, GRADE 40. SHOP LISTS AND BENDING DIAGRAMS TO BE SUBMITTED AND APPROVAL SECURED BEFORE FABRICATION IS BEGUN.

DETAILS OF REMODELING EXISTING BENTS
BRIDGES OVER
TYRONZA RIVER
POINSETT COUNTY
ROUTE 63
SEC. 9
ARKANSAS STATE HIGHWAY COMMISSION
LITTLE ROCK, ARK.

DRAWN BY: TFB DATE: 11/2/74
CHECKED BY: FH DATE: 1-6-75
DESIGNED BY: E.H. DATE: Jan 75
2644A, 2885A, 3872A
BRIDGE NO. 3311A, 3872A DRAWING NO. 18483



COMPLETE LIST OF REINFORCING STEEL FOR ONE 40' SPAN

Mark	Size	Length	No. Req'd. when 'S'	Diagram
S1	5	25-0	42 44 46 48 50 52	Straight Rod
S2	5	25-9	20 21 22 23 24 25	See Drwg. 5495
S3	4	5-7	47	Straight rod
S4	4	4-5	68 70 72 74 76 78	See Drwg. 5495
S5	4	3-0	64 66 68 70 72 74	
S6	5	22-11	40	Straight Rods
S15	5	6-3-5	4 each length	
S16	5	2-4	4	
S17	5	1-3	4	
S18	5	24-9	2 1-9 1/2	
S19	5	22-6	2 2-2 1/2	
S20	5	20-3	2 2-11	
S21	5	18-1	2 0-0	
S22	5	15-10	2 1-3	
S23	5	13-6	2 1-10 3/4	
S24	5	11-5	2 2-5	
S25	5	9-1	2 0-3	
S26	5	8-10	2 1-0	
S27	5	4-7	2 1-5 1/2	
PO1	5	5-4	32	See Drwg. No. 5495
PO2	5	2-8	48	Not a pay item

Dimensions shown are to centers of bars

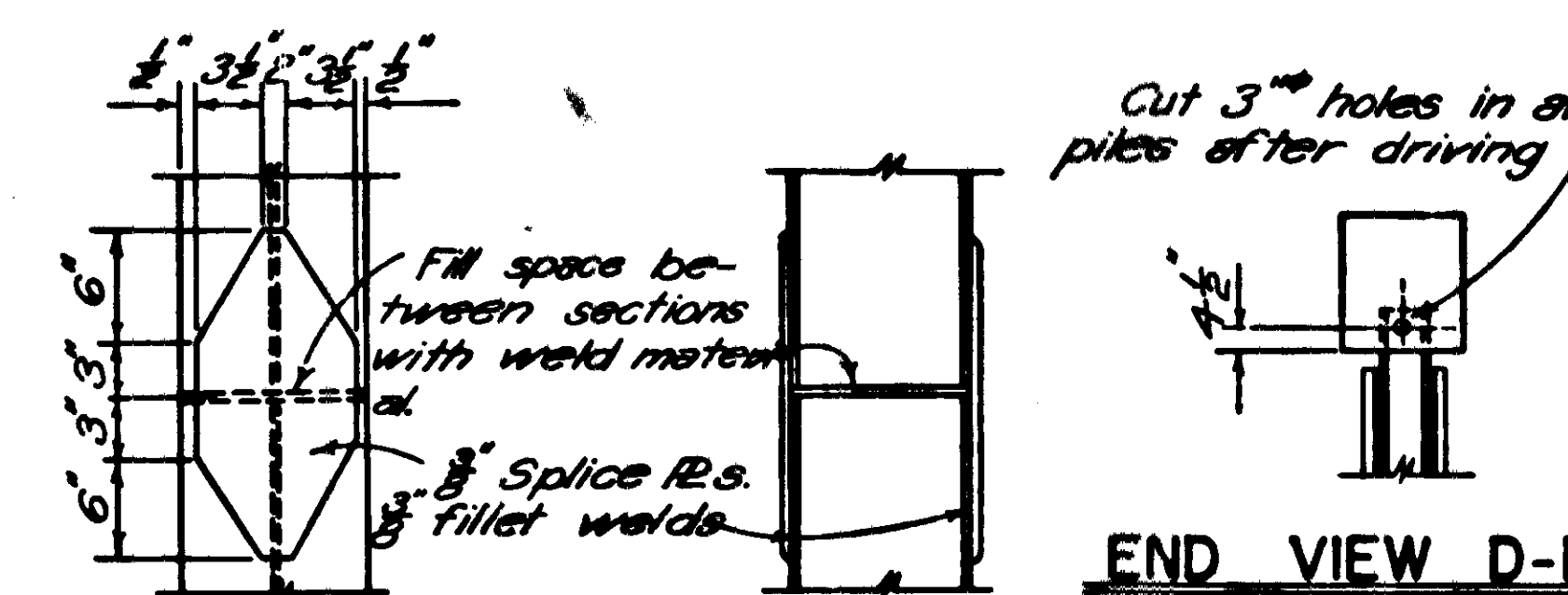
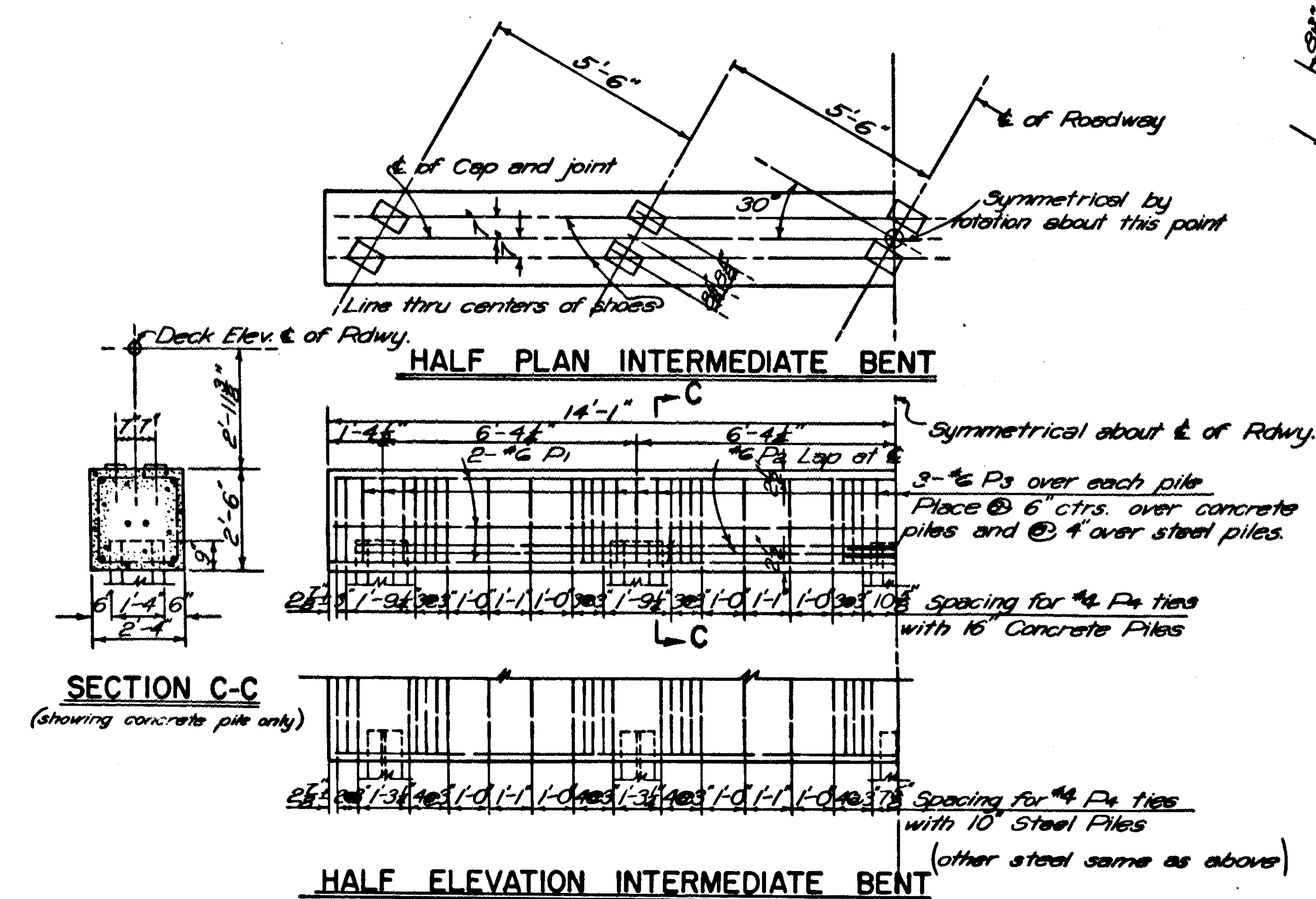
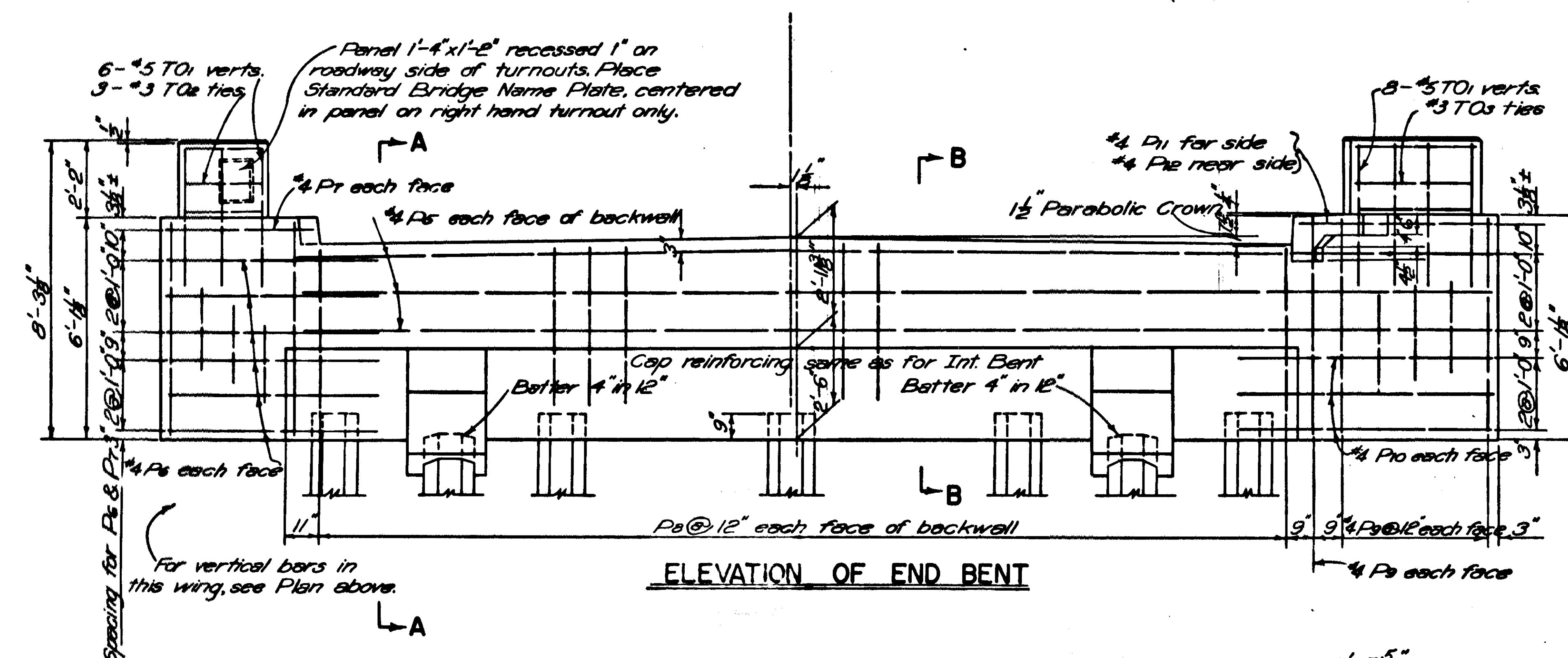
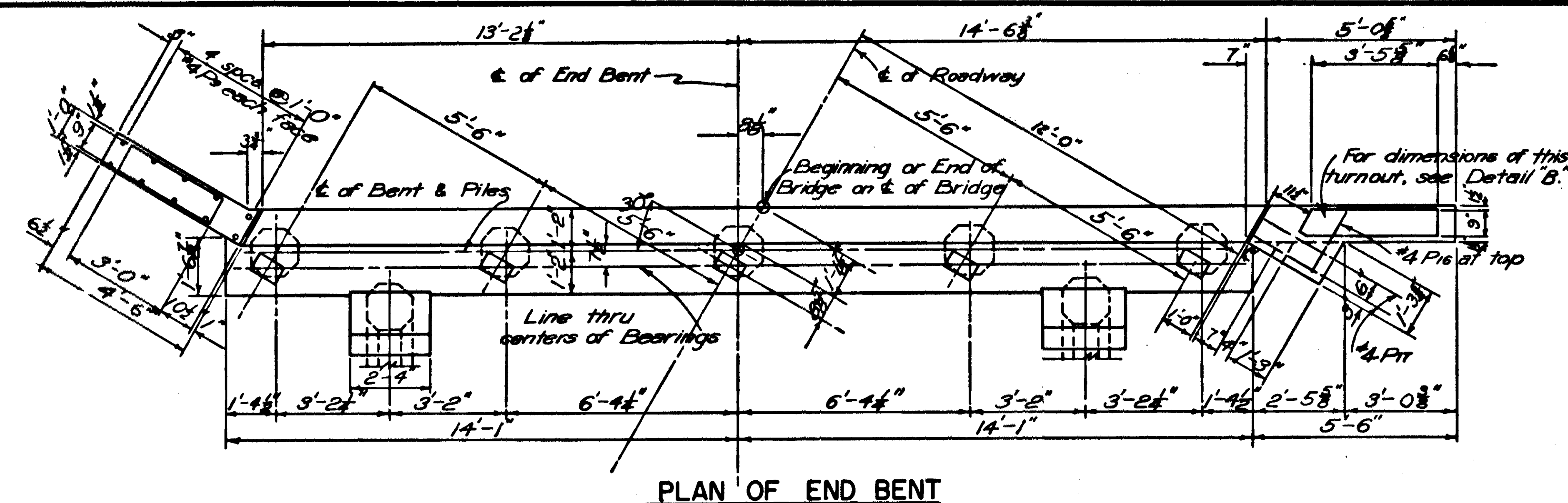
NOTE:
For details not shown and general notes See Drwg. No. 5495
For details of pile bents See Drwg. No. 5497A

Span c-c Jts = 'S'	Post Spacing			Strut Spacing	Reinforcing Spacing				Camber 'X'
	'a'	'b'	'c'	'd'	'e'	'f'	'g'		
40'	5'-8"	5'-6½"	5'-6½"	8'-7"	7"	1'-3"	7½"	7½"	
41'	5'-11"	5'-8"	5'-8"	8'-10"	6"	1'-2½"	6½"	½"	
42'	5'-11"	5'-10"	5'-10"	9'-1"	6"	1'-1"	6½"	¾"	
43'	5'-11"	6'-0"	6'-0"	9'-4"	5½"	1'-0"	6"	5/8"	
44'	6'-2"	6'-1½"	6'-1½"	9'-7"	5½"	0'-10½"	6"	¾"	
45'	6'-7"	6'-3"	6'-1"	9'-10"	4½"	0'-10"	5"	¾"	

Revised: 1-23-59 F.O.M. Bar size & numbers. Rely width.

APPROVED BY
W. H. ...
Bridge Design Engineer

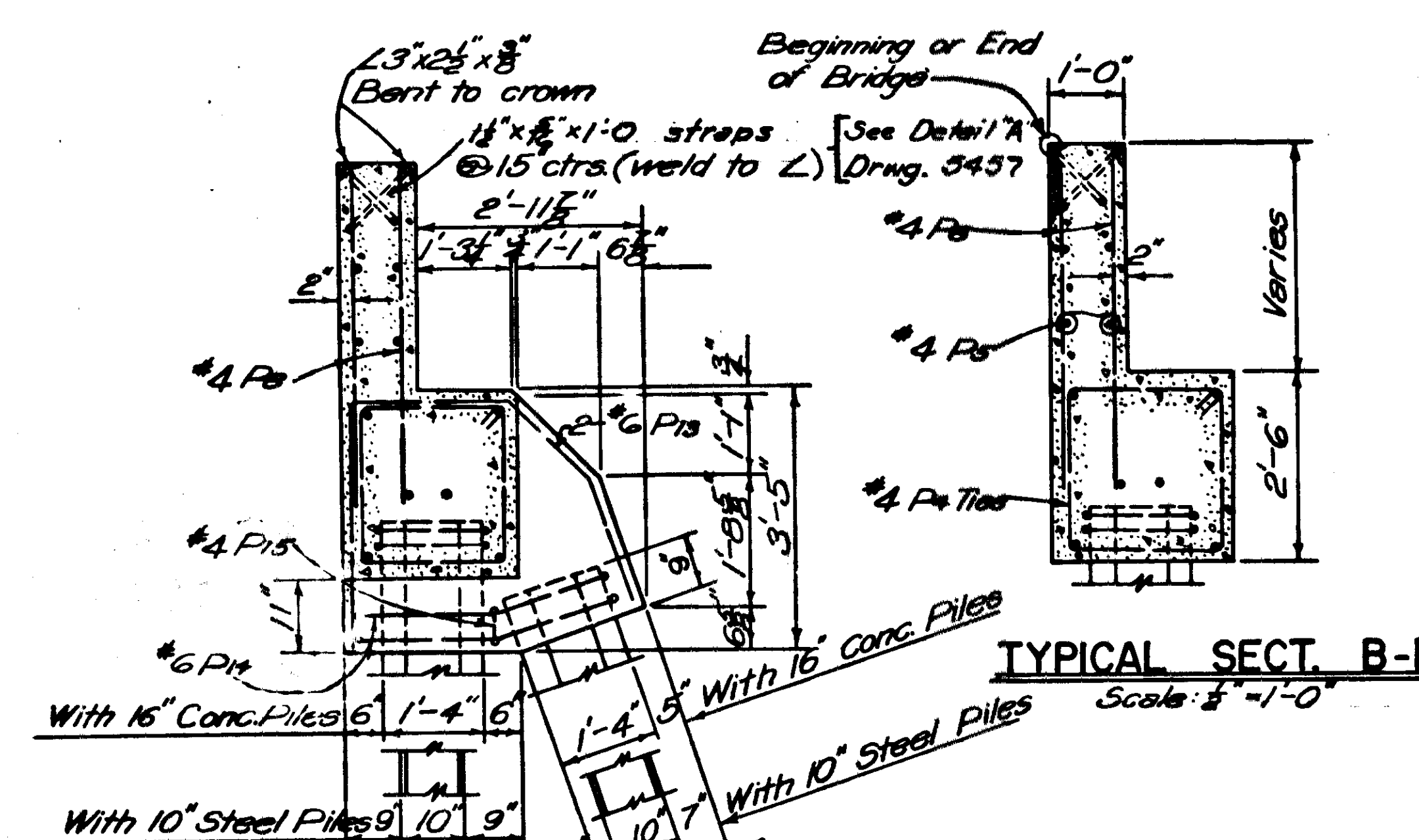
DETAILS OF STANDARD
40'-45' I-BEAM SPANS, 30° SKEW, RT. FWD.
24'-0" CLEAR ROADWAY, 1'-0" CURBS
STEEL PLATE GUARD RAIL, CONC. POSTS
ARKANSAS STATE HIGHWAY COMMISSION
LITTLE ROCK, ARK.
Drawn By: E.A.W. Date: 11-3-52
Chd. By: J.H.K. Date: 11-7-52
Scale: 1/8" = 1'-0"
and as noted
DRAWING NO. 5497



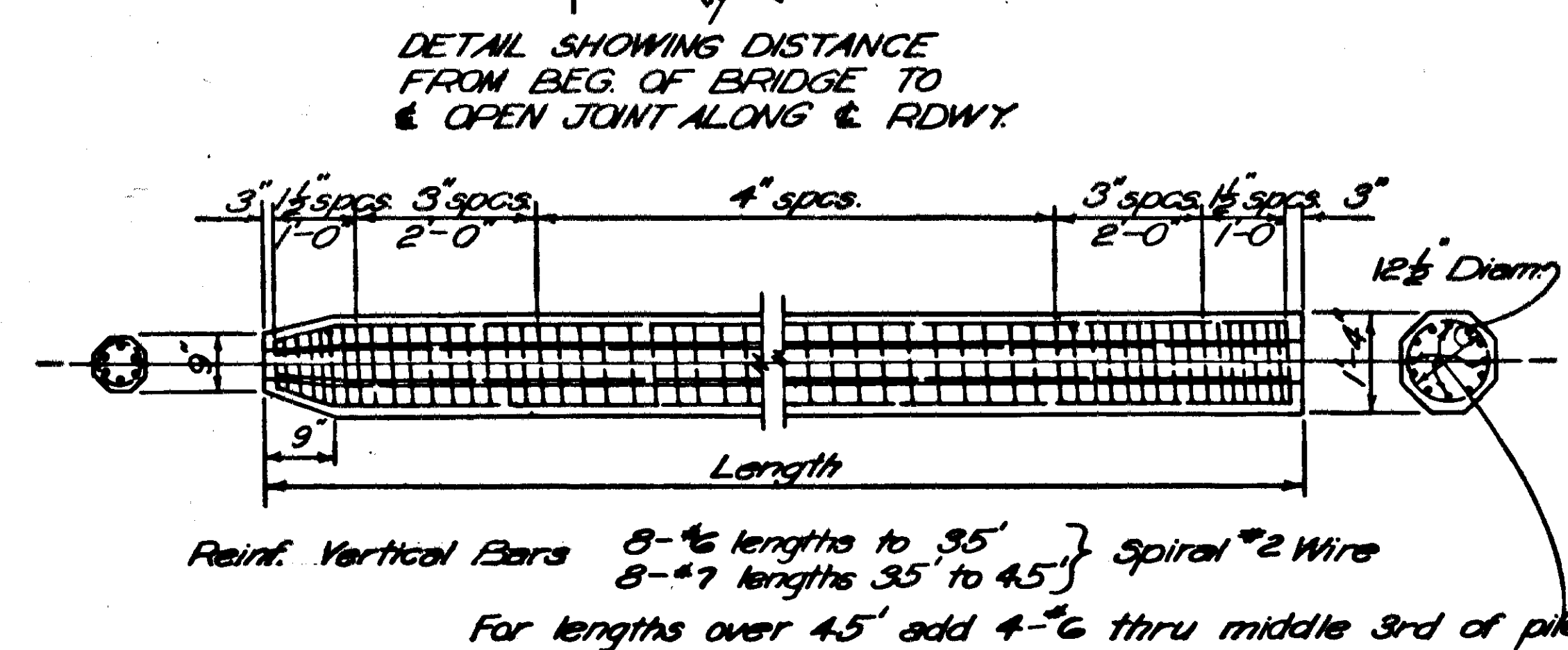
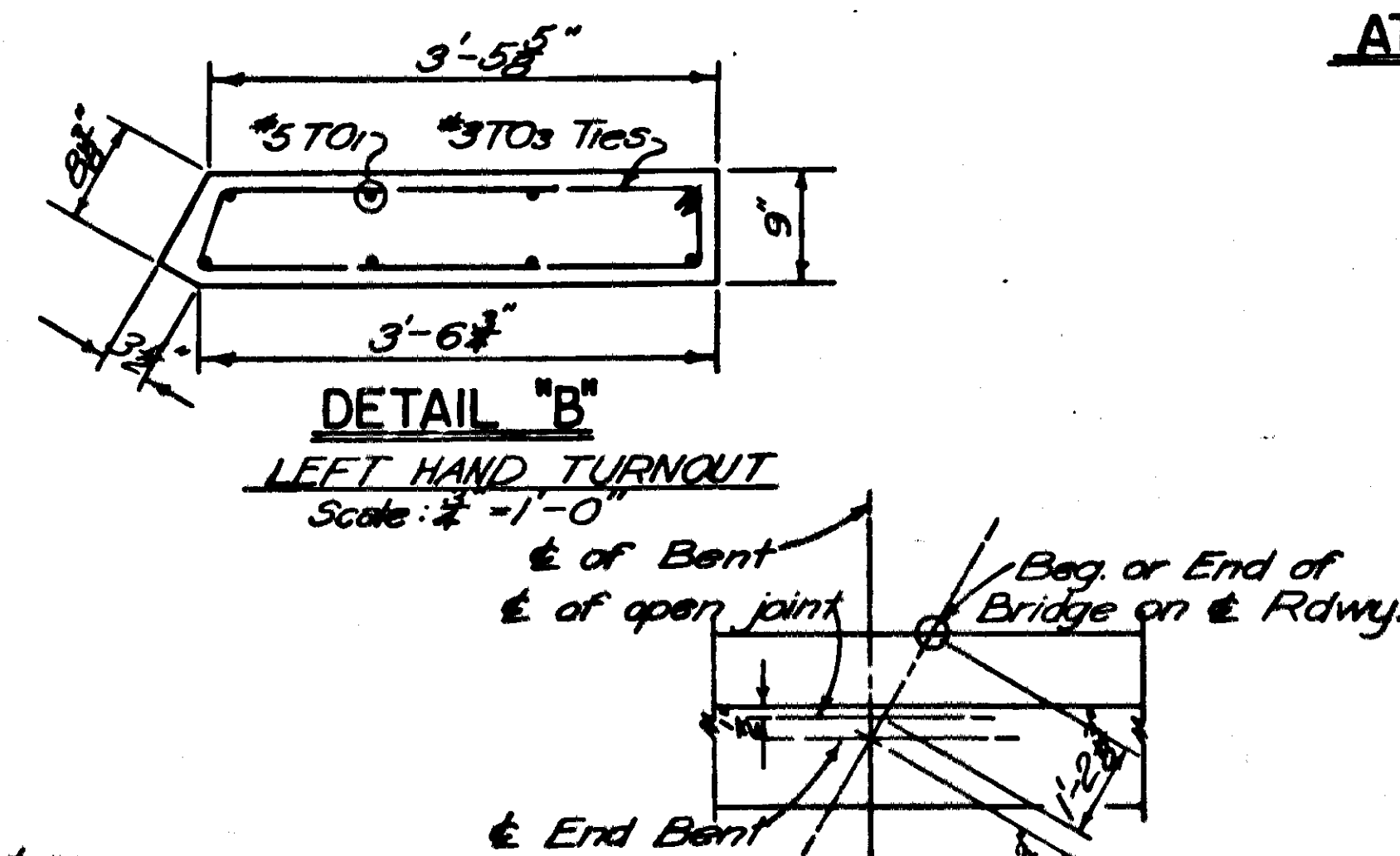
PILE SPLICE DETAILS

Scale: 1" = 1'-0"

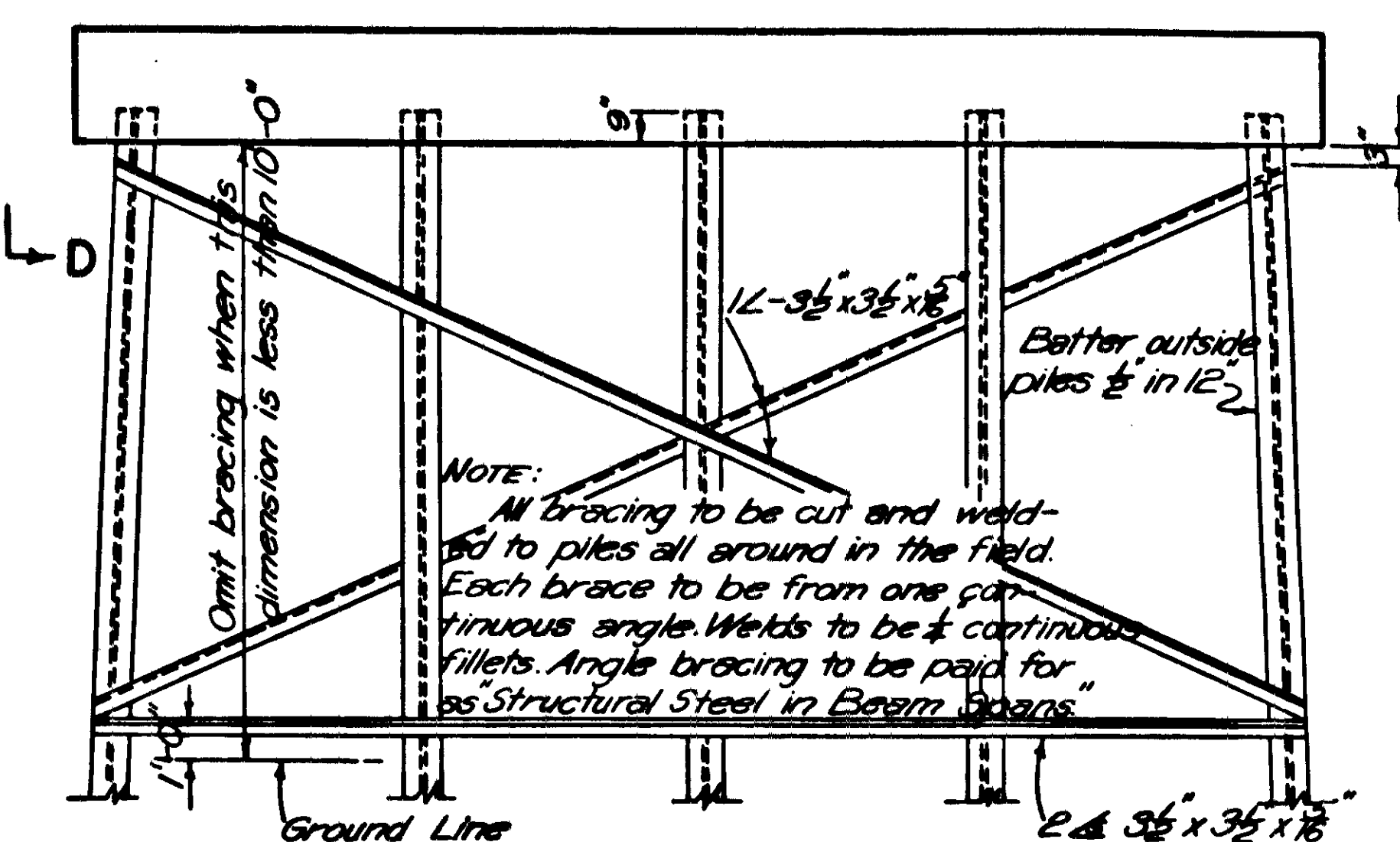
Generally all piles shall be driven full length and shall not be spliced except by permission of the Engineer.



SECTION A-A
AT BATTER PILES



FED. ROAD DIST. NO.	STATE	PROJECT NO.	FISCAL YEAR	SHEET NO.	TOTAL SHEETS
6	ARK.				
STATE JOB NO.					



LIST OF REINFORCING STEEL

[illegible]

* 54 Ties if steel piles are used

NOTES

Steel Piles are to be driven to refusal. Concrete Piles to be driven to a minimum capacity of 28 Tons. See Layout for type of Piles. For Details of Superstructure and for General Notes, see Drawings 5497 and 5495.

[illegible]

DETAILS OF
 STANDARD PILE BENTS
 40' TO 45' I-BEAM SPANS
 24'-0" CLEAR RDWY. 1'-0" CURBS
 30° SKEW RT. FORWARD

ARKANSAS STATE HIGHWAY COMMISSION
LITTLE ROCK, ARK.

Drawn By: W.H.M. Date: 10-15-52
Traced By: W.H. Date: 7-26-55 *NEW 7-26-55*
Checked By: J.H.K. Date: 11-5-52
Scale: $\frac{3}{8} \text{ in.} = 1 \text{ ft.}$
except as noted

PRIORS
DRAWING No. 5497A